

Zoom Teardrop

Very popular shape lightweight portable flag ideal for indoor or outdoor displays and events

features & benefits

- Suitable for indoor or outdoor use
- Ideal for point of sale, retail display or exhibition environments
- Overall height 4150mm approx
- Unique design allows the flag to rotate when the wind direction changes
- Quick assembly, flat packs for easy transportation
- Choice of bases to suit a range of applications and venues



Weighting ring option



180mm fixing loop sewn to base of flag



Base foot



Weighting ring



Ground stake



Drive-on Car foot



Drive-on Car foot option



Ground stake option

hardware specifications

Overall assembled dimensions:
(base foot & weighting ring option)
4150mm (h) x 560mm (w) x 560mm (d) approx
Weight: 7.5kg approx when filled with water
Base foot dimensions: 560mm x 560mm approx
Weight: 0.5kg approx
Weighting ring dimensions: 470mm dia approx
Weight: 0.15kg approx empty
Weight: 6kg approx when filled with water
Capacity: 6 litres of water approx
Ground stake dimensions:
800mm x 120mm approx
Weight: 1.5kg approx
Drive-on car foot dimensions:
565mm x 330mm approx
Weight: 1.8kg approx

graphic specifications

Recommended substrate:
Lightweight flag textile
Recommended print process:
Dye-sublimation print onto one side of the flag only
Visual size & graphic dimensions:
Refer to template:
zoom_teardrop_rev1
A full length pocket has to be sewn into the left hand edge of the flag together with a fixing loop (see above) and please refer to the template.
Note: The graphic template is an initial guideline only and may need dimensional adjustment dependant upon specific flag substrates used.

additional information

Zoom Teardrop flags are designed to withstand approximate windspeeds of 13 to 18 miles per hour (Beaufort Scale 4)

Supporting poles and Base foot are supplied with carry bags. Ground Stake and Drive on-foot are not supplied with carry bags.

Assembly Instructions

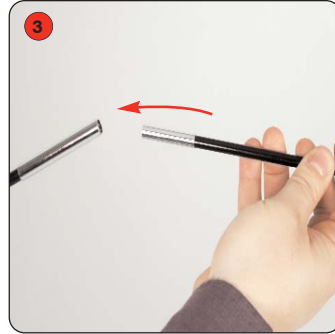
Supporting pole/flag assembly



Assemble the bungee corded poles together.



Insert the middle sized GRP rod into the bungee corded poles.



Insert the smallest diameter GRP rod.



Feed the pole assembly (thinnest end first) into the flag pocket. **Warning: take care not to damage the pocket when inserting the rods/poles.** Bend the GRP rods to allow the flag to take shape.



Attach the looped fabric end of the flag to the pole clasp.



Fit the base adaptor to the assembled poles.



Base foot and weighting ring option



Open out the base foot.

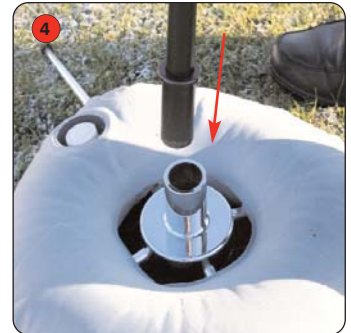


Place the base foot on the ground.



Fill the weighting ring with water (hosepipe recommended) and place over the base foot.

Warning: Do not drop the weighting ring.



Fit the supporting pole/flag assembly into the base foot.

Ground stake option



Push the the ground stake firmly into the ground.



Insert the supporting pole/flag assembly into the ground stake.

Drive-on car foot option



Drive vehicle onto the car-foot .



Insert the supporting pole/flag assembly into the car-foot