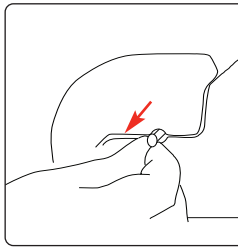
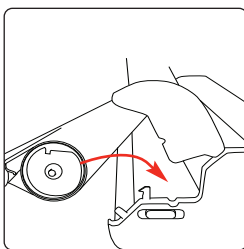
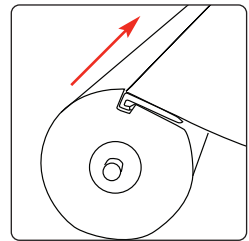
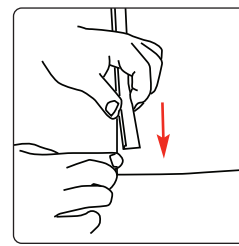
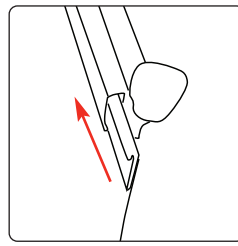
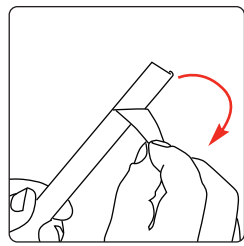
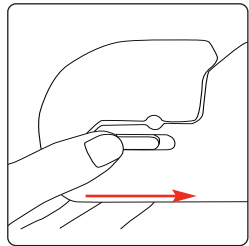


Hardware specifications	Graphic specifications/ additional info
Assembled dimensions 2170mm (h) x 846mm (w) x 180mm (d) (mm)	Visual Graphic Area: 800x2120mm
Weight: 4.08kg Single sided 800mm	Visual Graphic Area: 850x2120mm
4.68kg Double sided 800mm	Visual Graphic Area: 850x2120mm
5.2kg Single sided 850mm	Include 150mm at bottom
5.8kg Double sided 850mm	(non-visible image area in roll mechanism)
6kg Single sided 1000mm	Upgrade to additional cassette
6.6kg Double sided 1000mm	and rail doubler to convert to double-sided unit
	Code: UB501C- 800/850/1000

We are continually improving and modifying our product range and reserve the right to vary the specifications without prior notice. All dimensions and weights quoted are approximate and we accept no responsibility for variance. E&OE.

Attaching graphic

When attaching graphic sliders make sure the slider is attached to the front of the graphic for the graphic rail and to the back for the graphic cassette.



Note: Pull up on the graphic to release the roller mechanism

Note: When changing graphic please ensure you replace the pin into the roller before opening the banner